



TMX W325

SAW Bandpass Filter – Wireless LAN – RF
Specification (Rev-1)

- ▣ Technical overviewP01
- ▣ ConfigurationP01
- ▣ Typical ResponseP02
- ▣ Package Drawing.....P02

TMX W325

SAW Bandpass Filter – Wireless LAN - IF
Specification (Rev 1)

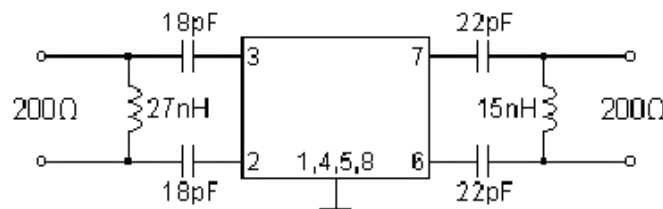
May 14th, 2005

Electrical Parameters	Unit	Minimum	Typical ⁽¹⁾	Maximum
Source Impedance (balance drive)	Ω	-	200	-
Load Impedance (balance drive)	Ω	-	200	-
Center Frequency f_0	MHz	-	374	-
Relative Attenuation				
274 MHz to 331 MHz	dB	45	50	-
331 MHz to 352 MHz	dB	40	45	-
352 MHz to 357.5 MHz	dB	30	35	-
390.5 MHz to 396 MHz	dB	30	35	-
396 MHz to 404 MHz	dB	35	41	-
404 MHz to 417 MHz	dB	40	45	-
417 MHz to 474 MHz	dB	45	50	-
Insertion Loss in $f_0 \pm 7$ MHz	dB	-	9.0	10.0
3 dB Bandwidth	MHz	17	21	-
Ripple in $f_0 \pm 7$ MHz	dB	-	0.7	1.0
Group Delay in $f_0 \pm 7$ MHz	ns	-	40	100
Triple transist suppression	dB	30	40	-
Package type & size				
Length x Width	mm ²	-	3.8 x 3.8	-
Height	mm	-	1.3	1.5
Pin Out				
Input	2	Output	6	
Input Return	3	Output Return	7	
Case Ground	4, 8	To Be Grounded	1, 5	

Notes :

(1) Typical values are nominal performances at room temperature

200 Ω / 200 Ω CONFIGURATION



Maximum Ratings

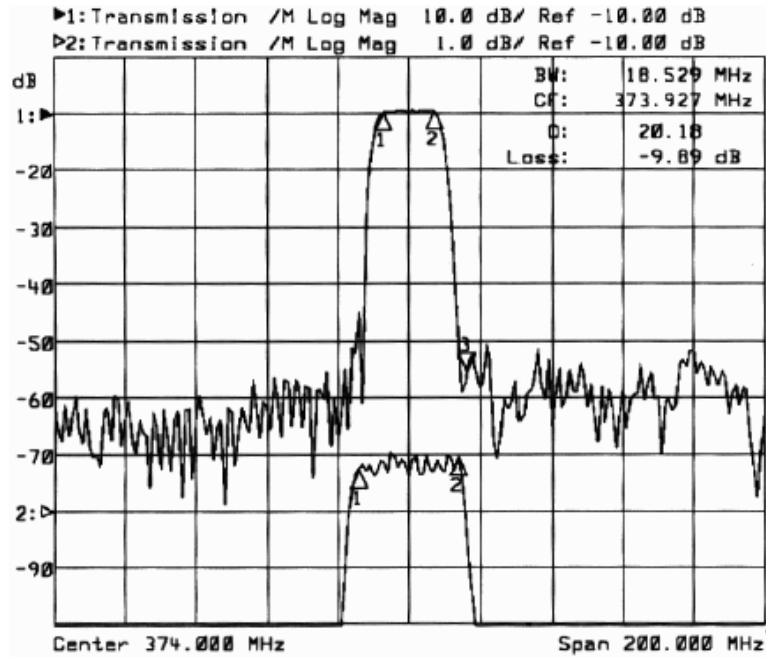
Rating	Unit	Value
Operating Temperature Range	T_A	-10 to +85 °C
Storage Temperature Range		-40 to +85 °C
Input Power		10 dBm

TMX W325

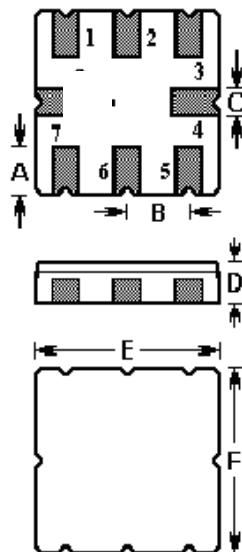
SAW Bandpass Filter – Wireless LAN - IF
 Specification (Rev 1)

May 14th, 2005

TYPICAL S21 RESPONSE



PACKAGE DRAWING



Sign	Data (unit: mm)	Sign	Data (unit: mm)
A	1.00	D	1.50
B	1.27	E	3.80
C	0.60	F	3.80