



TMX W305

SAW Front-End Filter –DOMESTIC WIRELESS RECEIVERS - RF
Preliminary Specification (Rev-1)

- Technical overviewP01
- Matching Network for 50Ω / 50Ω ConfigurationP01
- Typical Response (Measurement)P02
- Package DrawingP03

TMX W305

SAW FRONT - END Filter - DOMESTIC WIRELESS RECEIVERS - RF

Specification (Rev 1)

January 25th, 2005

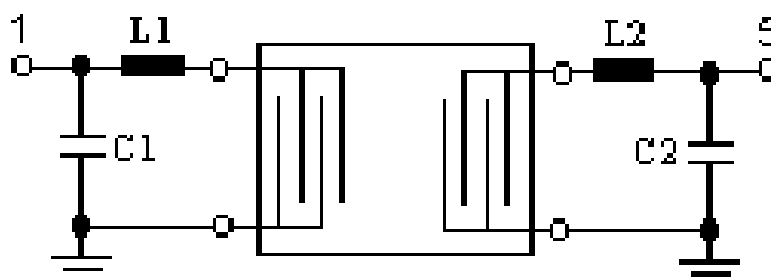
Operating temperature range : [-35°C; +85°C]

Electrical Parameters	Unit	Minimum	Typical ⁽¹⁾	Maximum
Source Impedance (single ended)	Ω	-	50 ⁽²⁾	-
Load Impedance (single ended)	Ω	-	50 ⁽²⁾	-
Center Frequency fo	MHz	314.925	315.00	315.075
Bandwidth at 3dB	kHz	-	600	-
Rejection				
at fo – 21.4 MHz (Image)	dB	40	50	-
at fo – 10.7 MHz (LO)	dB	15	30	-
ultimate	dB	-	80	-
Insertion Loss	dB	-	3.0	5.5
Frequency Aging	Ppm/yr	-	≤ 10	-
Temperature				
Turnover Temperature	°C	24	39	54
Turnover Frequency	MHz	-	fo	-
Frequency Temperature Coefficient	Ppm/°C	-	0.032	-
External Impedance Match				
Series Inductance L ₁ , L ₂	nH	-	80	-
Shunt Capacitance C ₁ , C ₂	pF	-	13	-
Package type & size				
Length x Width	mm ²	-	5.0 x 5.0	-
Height	mm	-	1.35	1.5
Pin Out				
Input	1	Output	5	
Input ground	2	Output ground	6	
Case Ground	4,8	To Be Grounded	3,7	

Notes :

- (1) Typical values are nominal performances at room temperature
- (2) External matching circuit is required (see drawing hereunder)

50 Ω / 50 Ω CONFIGURATION



TMX W305

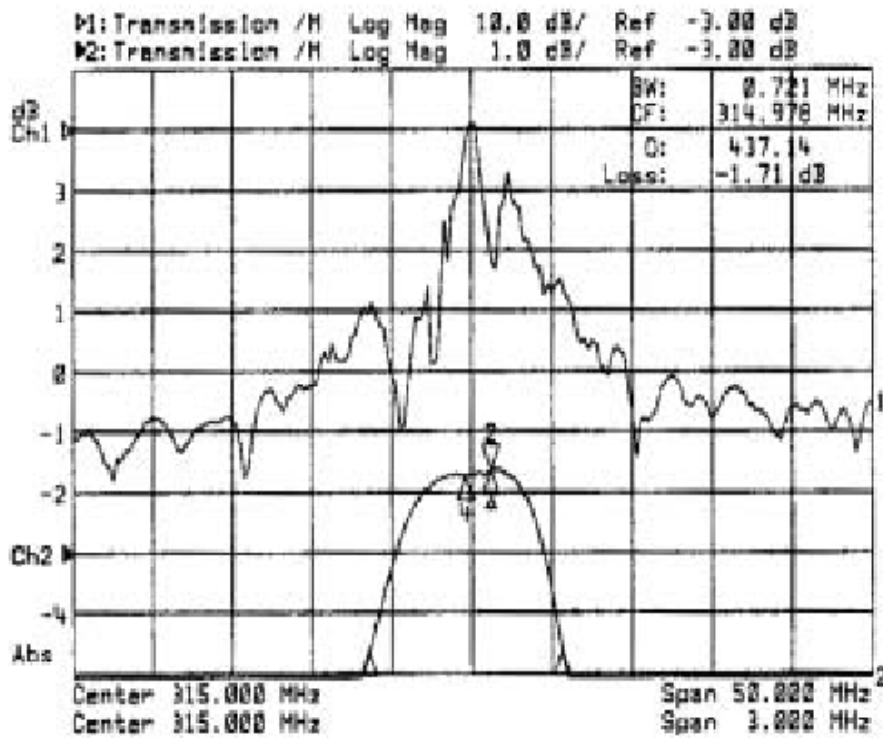
SAW FRONT - END Filter - DOMESTIC WIRELESS RECEIVERS - RF
 Specification (Rev 1)

January 25th, 2005

Maximum Ratings

Rating	Unit	Value
Input Power Level	13	dBm
Storage Temperature Range	T _{stg}	-45 to +85 °C
DC Voltage	V _{DC}	12 V

TYPICAL S21 RESPONSE

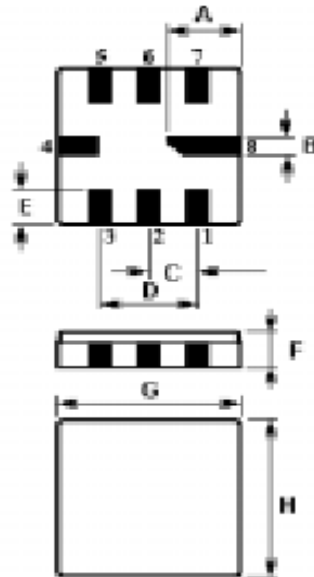


TMX W305

SAW FRONT - END Filter - DOMESTIC WIRELESS RECEIVERS - RF
 Specification (Rev 1)

January 25th, 2005

PACKAGE DRAWING



Sign	Data (unit : mm)	Sign	Data (unit : mm)
A	2.08	E	1.20
B	0.60	F	1.35
C	1.27	G	5.00
D	2.54	H	5.00