



TMX U397

SAW Passband Filter - Remote Control - RF
Preliminary Specification (Rev-1)

■ Technical overview	P01
■ Matching Network for 50Ω / 50Ω Configuration	P01
■ Typical Response (Measurement)	P02
■ Package Drawing	P02

TMX U397

SAW Passband Filter – Remote Control - RF Specification (Rev-1)

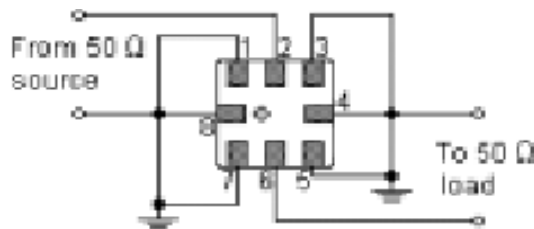
February 07th, 2005

Electrical Parameters		Unit	Minimum	Typical ⁽¹⁾	Maximum
Source Impedance (single ended)		Ω	-	50 ⁽²⁾	-
Load Impedance (single ended)		Ω	-	50 ⁽²⁾	-
Center Frequency Fo		MHz	-	345	-
Absolute Attenuation					
Fo – 10.7 MHz		dB	25	38	-
Fo – 21.4 MHz		dB	40	45	-
Insertion Loss in Fo \pm 300 kHz		dB	-	4.5	6.0
Bandwidth at 3dB		dB	600	850	1400
Package type & size					
Length x Width		mm ²	-	5.0 x 5.0	-
Height		mm	-	1.2	1.35
Pin Out					
Input / Output	2	Output / Input	6		
Case Ground	4, 8	To Be Grounded	1, 3, 5, 7		

Notes :

- (1) Typical values are nominal performances at room temperature
- (2) Not external matching circuit is required

50 Ω / 50 Ω CONFIGURATION



Maximum Ratings

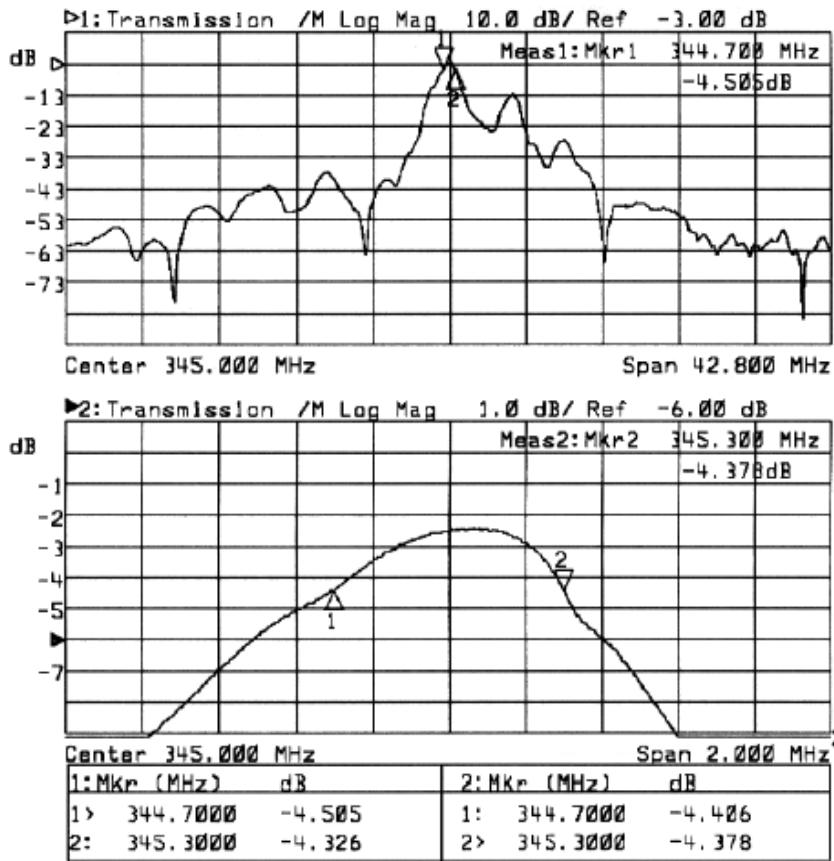
Rating	Unit	Value
Operating Temperature Range	-20 to +85	$^{\circ}\text{C}$
Storage Temperature Range	-40 to +90	$^{\circ}\text{C}$
DC Voltage	0	V
Input Power	18	dBm

TMX U397

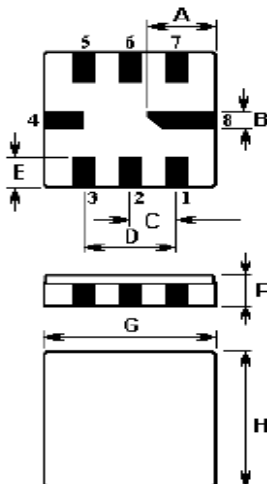
SAW Passband Filter – Remote Control - RF
Specification (Rev-1)

February 07th, 2005

TYPICAL S21 RESPONSE



PACKAGE DRAWING



Sign	Data (unit: mm)	Sign	Data (unit: mm)
A	2.08	E	1.20
B	0.60	F	1.35
C	1.27	G	5.00
D	2.54	H	5.00